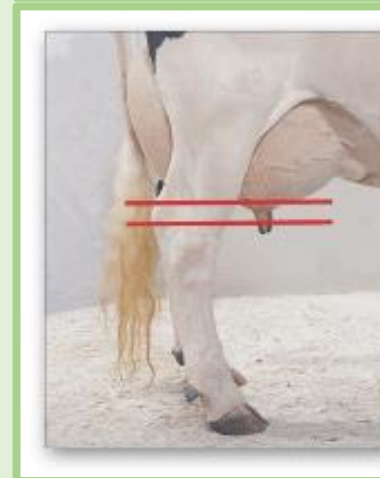
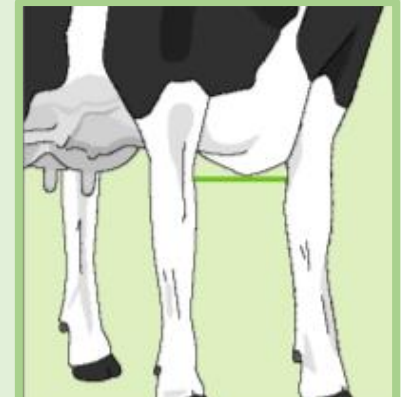
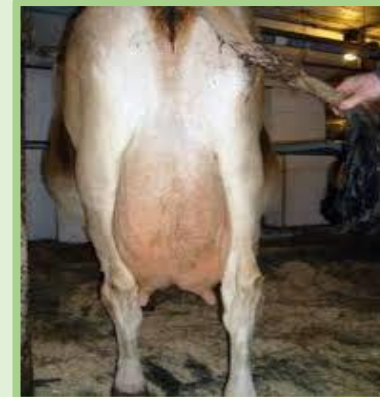


# CONFORMATION, TYPE CLASSIFICATION AND JUDGING (Level 1)

Topic	Training & information Content
5.1	Dairy Cattle Breeds and Breeding
5.2	Breeding program for a dairy farm (medium & large)
5.3	Conformation, Type classification and judging
5.4	Cow handling
5.5	Milk production recording
5.6	Heat Detection
5.7	Artificial Insemination
5.8	Pregnancy Diagnosis
5.9	Fertility Management
5.10	Cows with abnormal discharge
5.11	Fertility disease recording
5.12	Calving recording
5.13	Use of Key Performance Indicators



## 1. You will learn about (learning objectives):

- Importance of body parts of a cow in judging cattle
- Key body parts to evaluate when judging cattle



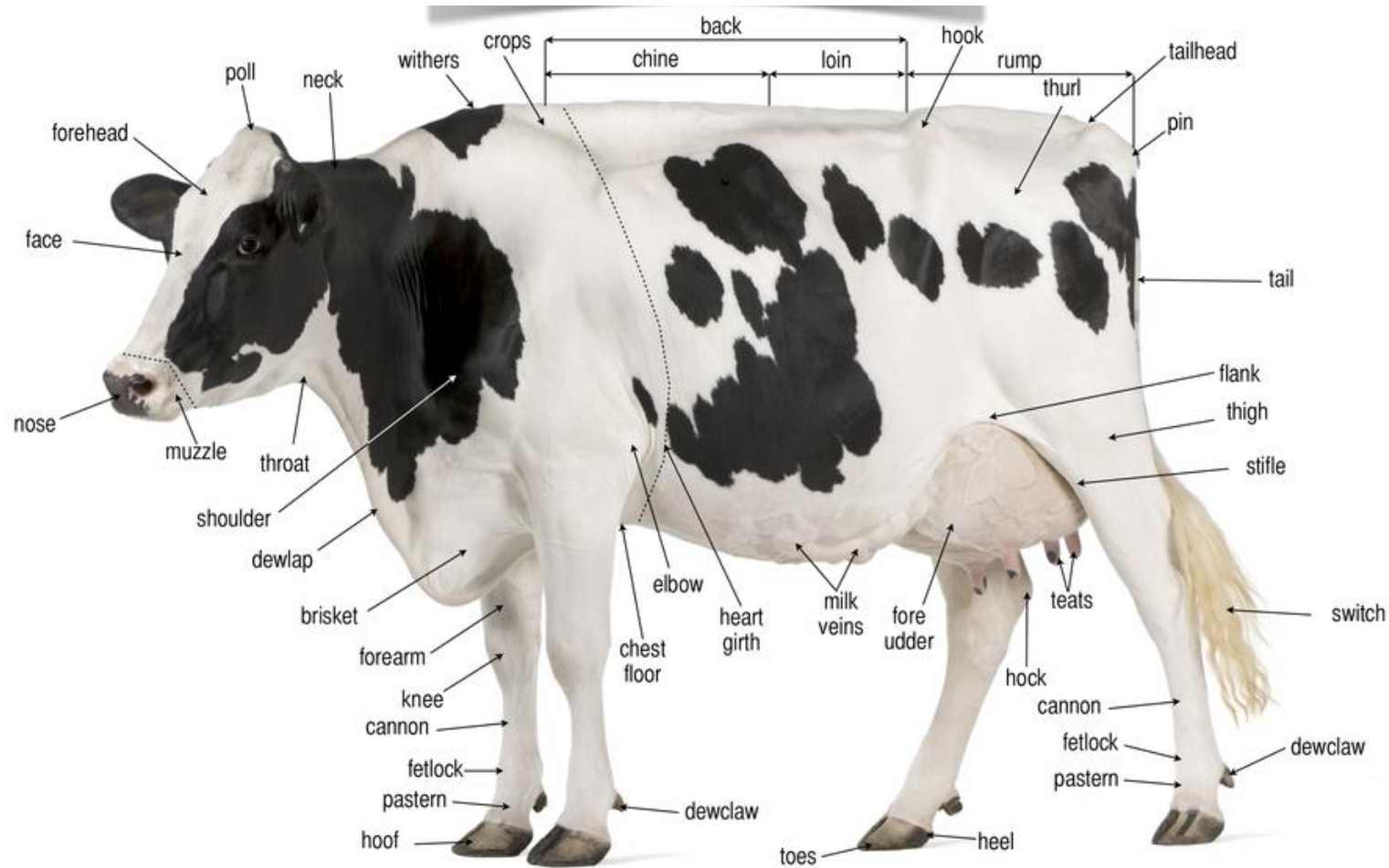
## 2. Background

- Farmers hardly look at the exterior look (conformation) of the cow when judging cattle.
- Cattle judging helps influence decision making e.g. during selection. It entails evaluating and ranking/scoring body part of the cow.



### 3. Parts of a dairy cow

- Knowing the body parts of a cow is a key step in successful cattle judging.



## 4. Classification of body parts

- Pay attention to:

**U**dder. = 0

**F**ertility. = ---

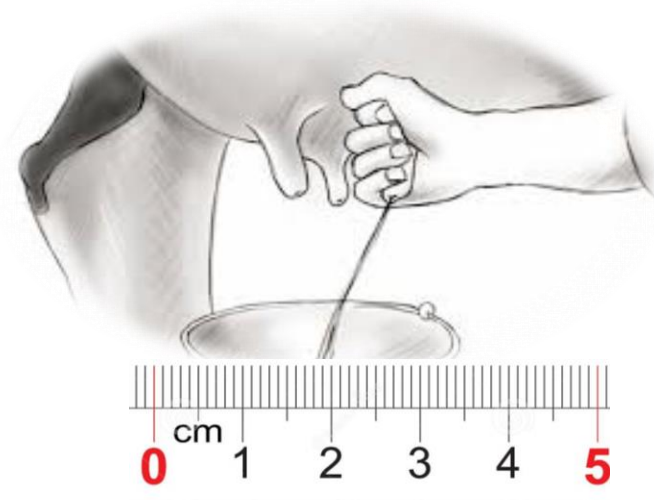
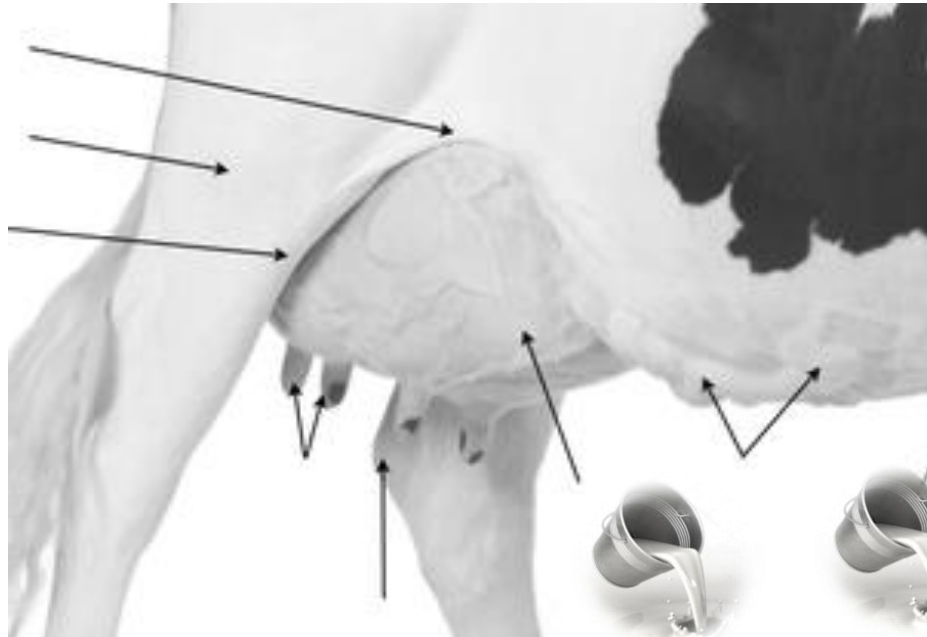
**C**apacity. = +++

**F**eet & **L**egs. = +



## 5. Udder

- Major consideration is given to the traits that contribute to high milk yield and a long productive life.

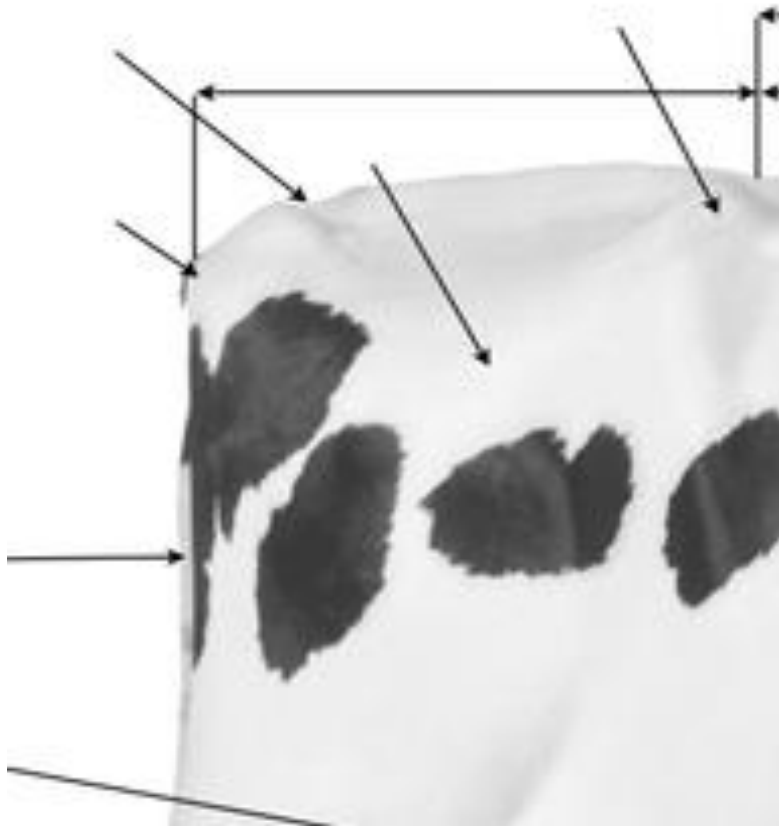


(Fore) udder should be firmly attached with moderate length and ample capacity

**U**dder



## 6. Fertility



Assessing Thurl placement



Assessing Rump angle

Fertility relates to calving with ease and having annual calving



**F**ertility

## 7. Capacity



Body depth relates with enough capacity to consume roughages

**C**apacity

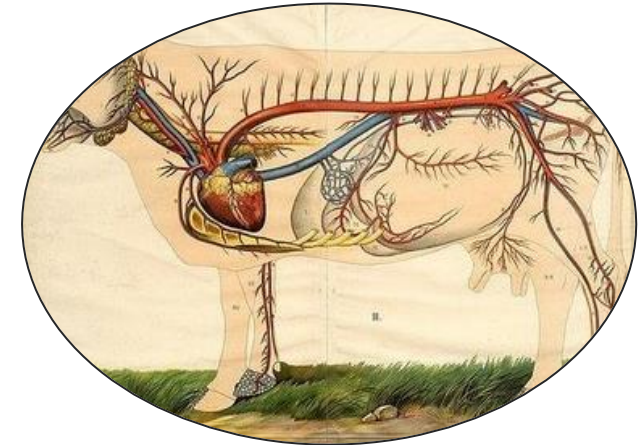


1 litre milk

=



400 litre blood circulation



Chest width relates to enough space for heart and lungs



## 8. Legs and feet



Foot angle and heel depth are evaluated



Locomotion is also given consideration

**L**egs & **F**eet

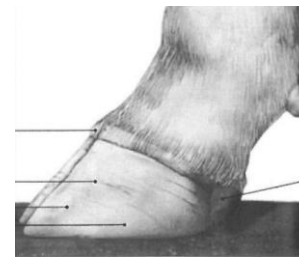
Degree of curvature is considered for Rear Leg Set side view



++

0-

--

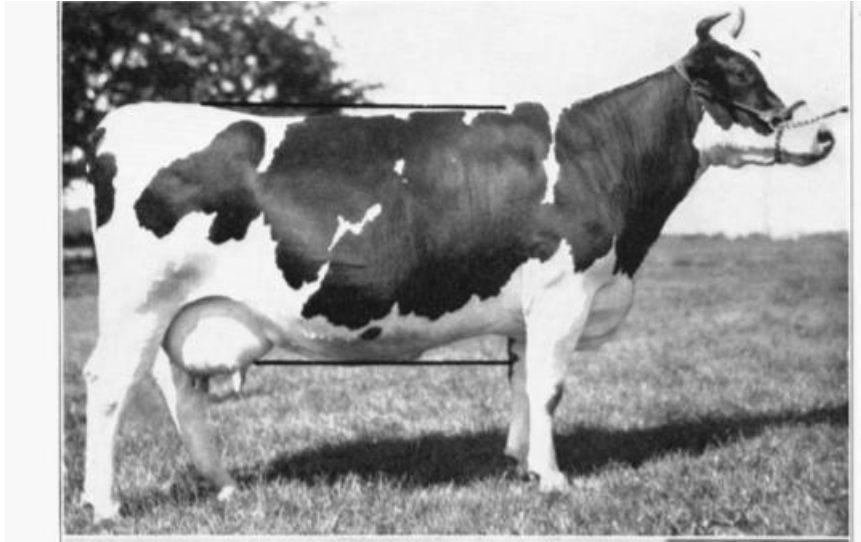


=

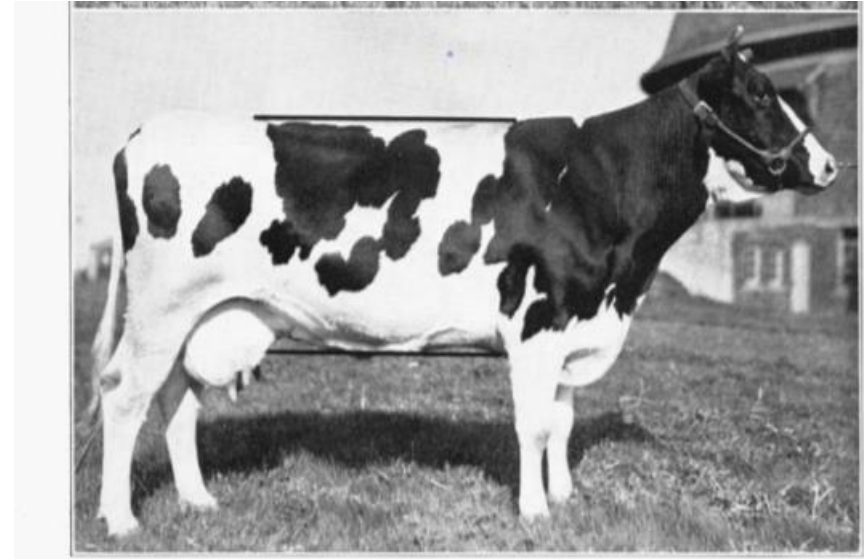


Desired trait eases locomotion, equals walking in comfortable pair of shoes

## 9. Example of a cattle judging



Udder	=	-
Fertility	=	0
Capacity	=	++
Feet & Legs	=	+



Udder	=	---
Fertility	=	+
Capacity	=	---
Feet & Legs	=	+

# 10. Summary

Watch:

<https://www.youtube.com/watch?v=5dYU-viBbHQ>

The screenshot shows a YouTube video player interface. At the top, there is a search bar and the YouTube logo. The video content is a presentation slide titled "Feet and Legs - 20pts". The slide lists three main points: "Set to Hock", "Walking", and "Feet". The "Set to Hock" point includes a sub-point: "Not too much, not too little". To the right of the text, there are six diagrams illustrating different hock and leg structures: "Correct", "Toe straight", "Sickle-hocked", "Correct", "Bow-legged", and "Cov-hocked". Below these diagrams are three photographs of cow legs and feet, and a small inset video of a man speaking. Below the video player, the video title "The Important Factors When Judging a Dairy Cow (FIX WITH AUDIO)" is displayed, along with view counts (16 views), a date (Oct 30, 2020), and interaction icons for likes, comments, shares, and saves. At the bottom, the channel name "Michael Lyne" is shown next to a profile picture and a red "SUBSCRIBE" button.