

HEAT DETECTION

Level 1

Topic	Training & information Content
5.1	Dairy Cattle Breeds and Breeding
5.2	Breeding program for a dairy farm (medium & large)
5.3	Conformation, Type classification and judging
5.4	Cow handling
5.5	Milk production recording
5.6	Heat Detection
5.7	Artificial Insemination
5.8	Pregnancy Diagnosis
5.9	Fertility Management
5.10	Cows with abnormal discharge
5.11	Fertility disease recording
5.12	Calving recording
5.13	Use of Key Performance Indicators



Heat Detection (Level 1)

You will learn about (learning objectives):

- ❑ How to detect a cow on heat
 - Basic introduction to Heat (Estrus) in cows
 - Recognizing all the important heat signs in cow

Heat Detection (Level 1)

Heat in cattle

Background

- Cows are ready to be served by Artificial Insemination (AI) or bull when in heat.
- Noting/detecting heat signs in cows requires more time be spent observing them



Heat Detection (Level 1)

- Start observing cows for heat signs immediately after calving



- Record all heat signs observed



Photo: Felix | Courtesy - Eric Kimalit, KE

Heat Detection (Level 1)

For instance:

- A farmer record important dates like the Calving Date e.g. March 11 for a given cow



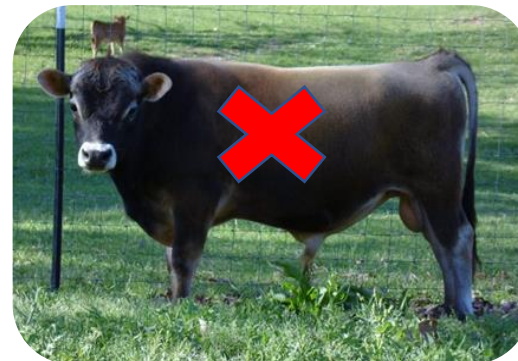
MARCH						
S	M	T	W	T	F	S
					1	2
3	4	5	6	7	8	9
10	11	12	13	14	15	16
17	18	19	20	21	22	23
24	25	26	27	28	29	30
31						

APRIL						
S	M	T	W	T	F	S
	1	2	3	4	5	6
7	8	9	10	11	12	13
14	15	16	17	18	19	20
21	22	23	24	25	26	27
28	29	30				

MAY						
S	M	T	W	T	F	S
			1	2	3	4
5	6	7	8	9	10	11
12	13	14	15	16	17	18
19	20	21	22	23	24	25
26	27	28	29	30	31	

- It is recommended to give the cow a waiting period of 60 days after calving; before is served again. i.e.

March 11- May 10= 60 days

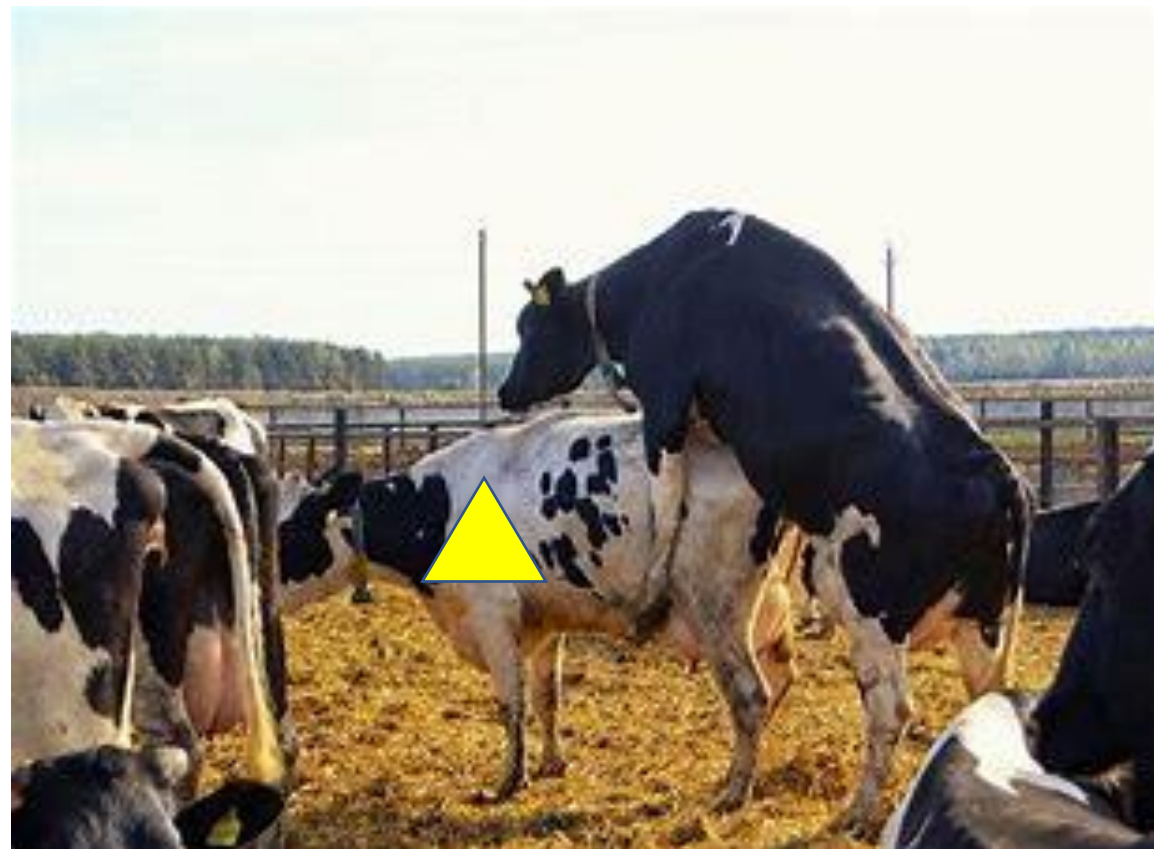


Heat Detection (Level 1)

Signs of Heat

Standing Heat

- Look for standing heat
- This is when the cow stands still while being mounted by other cows (100 points!!) – also the perfect time to serve by AI or bull



100 points, is what we need !!!!

Heat Detection (Level 1)

Other Signs of Heat

- Apart from Standing heat, other secondary heat signs to look for include:

Pre-signs of upcoming heat (Before Heat)

- Chin Resting - a 20% heat sign

Yellow triangle denotes cattle to give attention



20 points: More observation is needed

Heat Detection (Level 1)

- Sniffing/Licking and Flehming

Bulls behave this way, curling their lips and raising heads after sniffing a female's urine



Note: Sniffing/licking is mostly shown or seen when majority of herd is resting



Sniffing/Licking

Flehming



30 points: Keep an eye on this cow

Heat Detection (Level 1)

- Clear, slimy, stringy discharge



Clear,
stringy
discharge



Also 30 points: Keep an eye on this cow



Note: Discharge should be clear and clean

- Mounting or attempting to mount other cows



40 points: Stay patient, soon there will be more heat signs

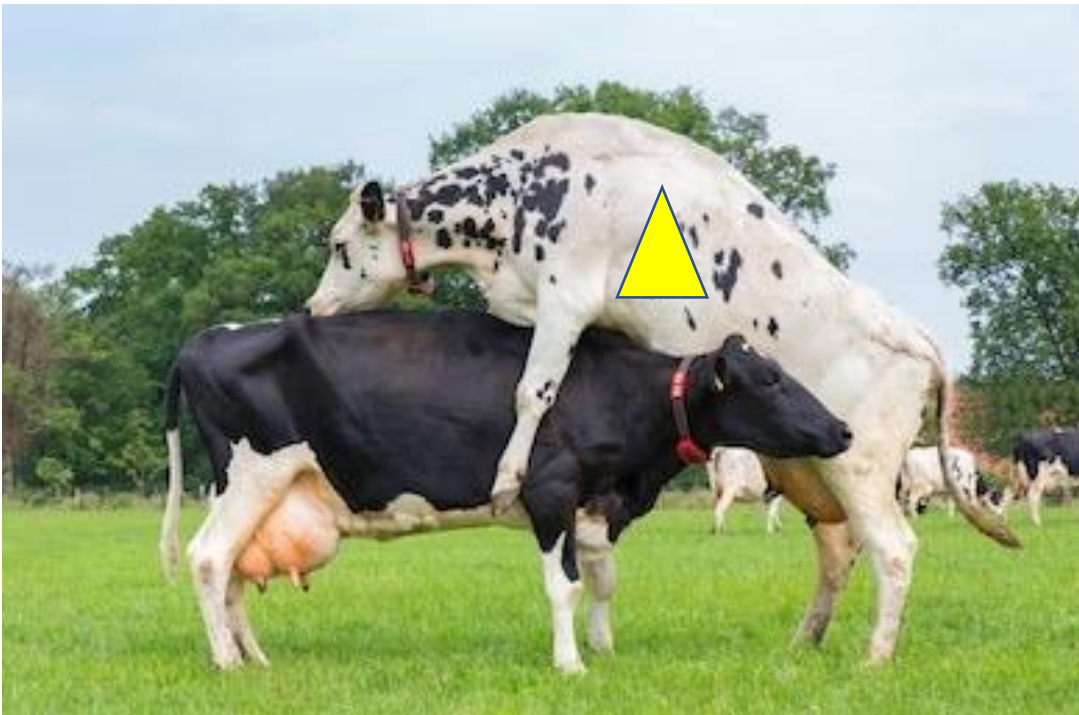


Note: Warning that the cow will show heat signs that can't be missed.

Heat Detection (Level 1)

- Mounting other cows on head side

Another most reliable heat sign. Cow must have shown some other signs already (earlier – but undetected).



The list of Other Heat signs continues...

Heat signs that are important to recognize;

Restlessness	5 %.
Drop in milk production	5%
Swollen vulva	5 %
Phleming	10%
Bellowing	10%
Mounted but not standing.	10 %.
Fresh saliva on cow's back	15%.
Chin resting.	20 %.
Back bending (touching clitoris)	30%
Continuous Clear Discharge (Few Days)	30 %
Sniffing several other cow's vagina	30 %.
Mounting farmer (when standing in front of cow)	30%
Mounting or attempt other cows.	40 %
Mounting head side other cows.	60 %
Standing Heat.	100 %.

10 20 30 40 50 60 70 80 90 100

60 points; no doubt that there is upcoming/more signals

Heat Detection (Level 1)

When to inseminate

As soon as cow has scored 100 points because of several other heat signs or showing standing heat (100%), then she is ready for service.



(30 points)

+



(40 points)

+



(30 points)



Total = 100 points (ready for insemination)



Heat Detection (Level 1)

In case of Natural service (use of bull)...

- Cows naturally allow the bull to mate while standing still. Do not necessary to tie her.



Note: *Never force the cow to stand still to be mounted!*



Heat Detection (Level 1)

Post Heat (After heat)

- Cows can bleed after they have been in strong heat or gone through a strong heat sign but not observed.
- Bleeding is a very positive sign and not a negative sign.



-END-

Heat Detection (Level 1)

Watch this video

<https://www.youtube.com/watch?v=oKfiZRucMqg>



signs of heat in cows



Heat detection – signs to look for in the paddock

-END-